



## *New!* Interventional Care Unit at the Northwest Campus Health Science Center

This newly renovated lab is one of many renovations to come as part of Wayne County Community College District's goal to continue to be a premier college for health science programs. The New Interventional Care Unit at WCCCD provides a state-of-art learning space that will serve several health science programs. It features multi-purpose beds equipped with current technologies as seen in hospitals and clinics in the region. The nursing students will be able to utilize the unit for a robust practice experience, and work alongside with certified nursing assistant students, pharmacy technology students, as well as surgical technology students.



# District Police Authority

**NATIONAL  
POLICE  
WEEK 2015**  
HONORING COURAGE, SALUTING SACRIFICE

The District Police Authority participated in National Police Week in Washington, DC. In 1962, President Kennedy proclaimed May 15 as National Peace Officers Memorial Day and the calendar week in which May 15 falls, as National Police Week. Established by a joint resolution of Congress, National Police Week pays special recognition to those law enforcement officers who have lost their lives in the line of duty for the safety and protection of others. President Barack Obama addressed this year's ceremony at the U. S. Capitol.



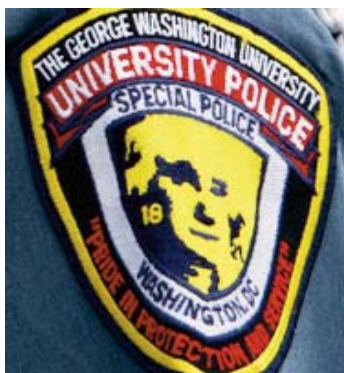
# District Police Authority



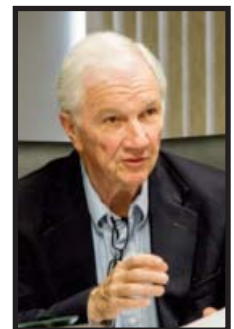
The partnership between the Wayne County Sheriff's Department and WCCCD's District Police Authority is so important for the success of the MCOLES certification and overall student safety due to the tremendous resources provided to the District.



## Best practice visit to the George Washington University Police Department in Washington, D. C.



# Board of Trustees Meeting- May 12, 2015



# Division of Administration and Finance

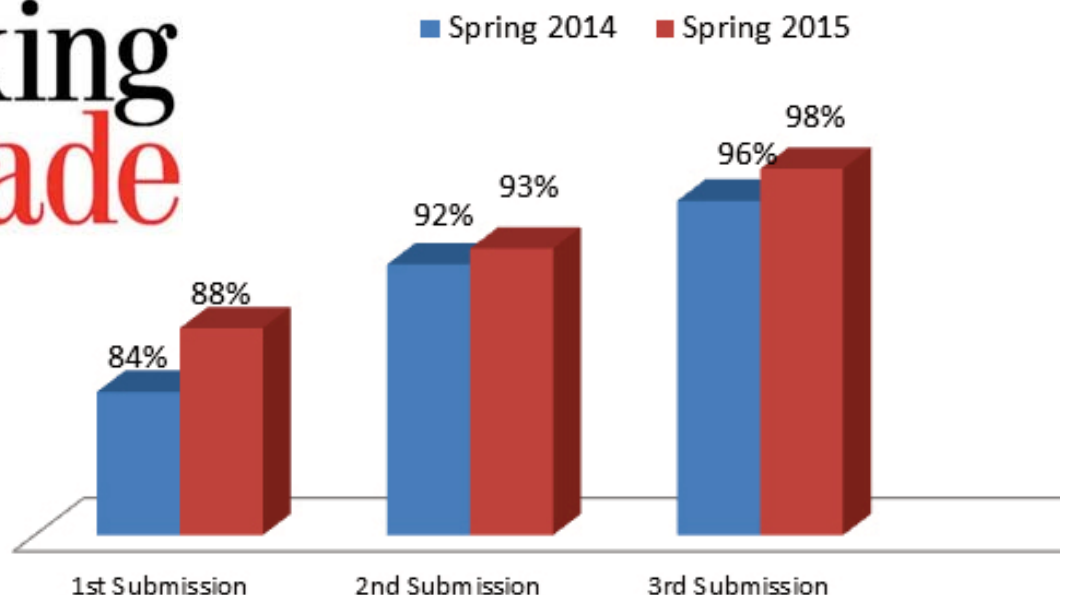
The Facilities Taskforce continues to meet weekly to discuss and provide updates on numerous major building projects taking place across the District. Each meeting the Prioritization of Projects list (POP) is reviewed to ensure adherence to the approved budget, progress, and schedule timelines. Projects range from landscaping schedules, pothole assessment and repairs, HVAC mechanical repairs, and computer lab upgrades.



## Office of Accountability and Transparency

With more than 750 instructors for the Spring 2015 semester, the Office of Accountability and Transparency has been monitoring grade submissions. The timely submission of grades supports our student growth and retention efforts across the District. The Office of Accountability, the Division of Student Services and the campuses work with the faculty to enter all grades.

### Spring 2015 Grade Submission Report

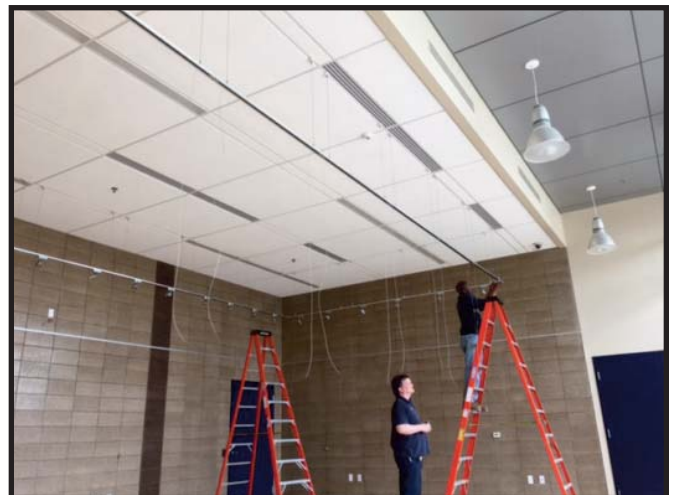


# Division of Administration and Finance

## Deferred Maintenance



# Division of Administration and Finance



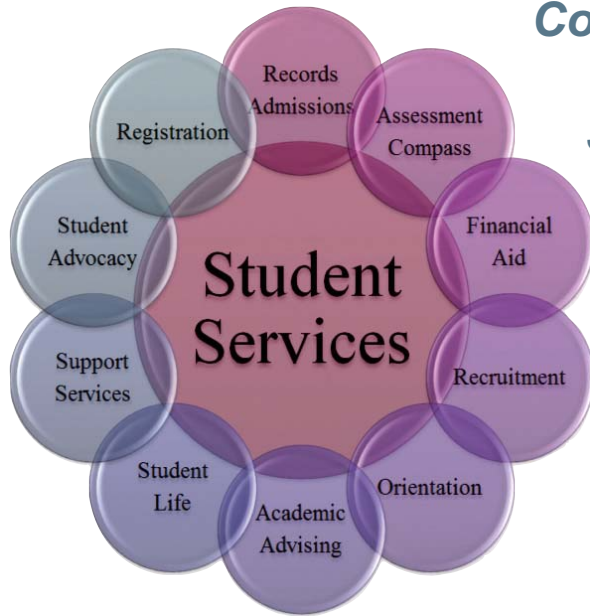
# Division of Student Services

## Commencement Ceremony

Ford Field

Saturday, June 6, 2015

11:00am



The Eastern Campus hosted the last graduation class meeting. Dual enrollment students from Cass Technical High School were in attendance because they will be graduating from WCCCD in June.



**Student Advocacy** - Alexa Thompson and Elonte Davis were selected to attend the Michigan College and University Partnership (MICUP)/Louis Stokes Alliance Summer Research Internship at Michigan Tech University. Edgar Vann accompanied the students.



### Graduation News

Students who complete degree requirements with exceptionally high scholastic averages are eligible to receive degrees with honors.

**Honor's Convocation**  
**Downriver Campus- EPAC**  
**Wednesday, June 3, 2015**

Summer/Fall 2014 5:30pm  
Spring 2015 7:30pm



# **District Command Center Serving Our Students! Persuading Admitted Students to Enroll: Try Everything!**

***PHONE CALLS! PHONE CALLS! PHONE CALLS!***

Administrative Team reaches out to thousands of admitted students to persuade them to register for the Summer 2015 and Fall 2015 semesters.



# The School of Continuing Education and Workforce Development



## Detroit Employment Solutions Partnership Training

Plumbing and Pipefitting

## Detroit Department of Transportation

Diesel Mechanic General Automotive



# The School of Continuing Education and Workforce Development



## Oakwood Hospital Healthy Communities Planning Coalition

Oakwood Hospital held a workshop for their Healthy Communities Planning Coalition. The workshop targeted four priority health issues that were determined by Oakwood's Community Health Needs Assessment.

**Total Continuing  
Education Participation: 37**

## Wayne Metropolitan Community Action Agency's Community Baby Shower

Low income mothers and fathers with infants up to three months of age were provided much needed items and resources to help welcome their new baby.

**Total Continuing Education Participation: 101**

## Wayne Metro Community Action Agency Youth Expo

The program was aimed at youth ages 13-18 providing employment and community resources, health services, haircuts and beauty tips, raffles and giveaways, clothing closet, and college resources.

**Total Continuing Education Participation: 38**



## Michigan Council of Women in Technology/Girl Scouts of Southeastern Michigan, Girls Rock It

Girl Scouts earned their Computer Expert Badge, as well as learned about careers in information technology and internet safety.

**Total Continuing  
Education Participation: 106**



# The School of Continuing Education and Workforce Development



## Michigan Institute for Public Safety Education

### **Wyandotte Henry Ford Hospital CPR and AED training course**

Brandon Young taught the CPR for Healthcare Provider class. Participants learned adult, infant and child CPR, AED and how to handle choking emergencies.

**Total Continuing Education Participation: 8**

---

### **Coaching Emergency Vehicle Operations**

Healthlink Medical Transportation held its Coaching the Emergency Vehicle Operator training. The goal of the course was to facilitate the student's knowledge of laws involving the operation of an emergency vehicle, with practical hands-on opportunities to evaluate each student's driving abilities.

**Total Continuing Education Participation: 33**

---

### **Eastern Michigan University Trenching and Excavation Class**

The class targeted workers, supervisors and equipment operators whose health and safety is threatened by the possibility of serious injury or death due to incidents involving trenching and excavation work.

**Total Continuing Education Participation: 11**

---

### **Wayne County CPR and First Aid training**

Wayne County Department of Public Health employees attended a CPR and First Aid training class. They learned basic first aid, CPR, AED and choking emergencies. These employees will represent the first line in cases of medical emergencies.

**Total Continuing Education Participation: 6**

---

### **U.S. Department of Homeland Security - Legal Refresher Course**

The U.S. Department of Homeland Security hosted a Legal Refresher Seminar. Participants learned about affidavit writing along with a legal refresher on the 4th Amendment and testifying.

**Total Continuing Education Participation: 84**

---

### **DTE - Fermi 2 Fire Brigade Training**

Employees from Detroit Edison Fermi 2 Plant in Monroe County attended fire brigade training. They refreshed their training in fire extinguishers, foam application and fire extinguishing including the burn room and shipboard simulator.

**Total Continuing Education Participation: 15**



# The School of Continuing Education and Workforce Development



## Local Business Exchange

The purpose of this workshop was to provide networking for local businesses. Available resources were also shared.

**Total Community  
Education Participation: 12**

## Buying and Selling Merchandise

The purpose of this workshop was to share strategies and methods for buying merchandise to re-sell locally and internationally.

**Total Community  
Education Participation: 16**



## Investment Round Table

The purpose of this workshop was to provide individuals with a general overview of some of the current investment markets. Some markets included the stock market, commodities market and the Foreign currency trading market.

**Total Community  
Education  
Participation: 9**



# The School of Continuing Education and Workforce Development



## U.S. Census Bureau Training

In partnership with the U.S. Census Bureau, a training workshop was conducted to educate and inform participants about the U.S. Census Bureau, and identified the skillsets needed for successful employment with the agency.



**Total Community Education Participation: 7**



## Community Forum



The purpose of this forum was to educate the community on the various issues surrounding Michigan's educational standards and public school reform. The workshop included a panel discussion from community leaders.

**Total Community Education Participation: 67**



# The School of Continuing Education and Workforce Development



## Juvenile Diabetes Research Foundation Annual Conference

This annual conference was a one-day one-stop resource for individuals and families struggling with Type 1 Diabetes. One of the main objectives was to provide an opportunity for participants to interact with healthcare practioners to learn more about ways to self manage blood sugar levels and stay healthy. They also participated in demonstrations showing the latest equipment and technology to help monitor and treat high blood sugar levels.

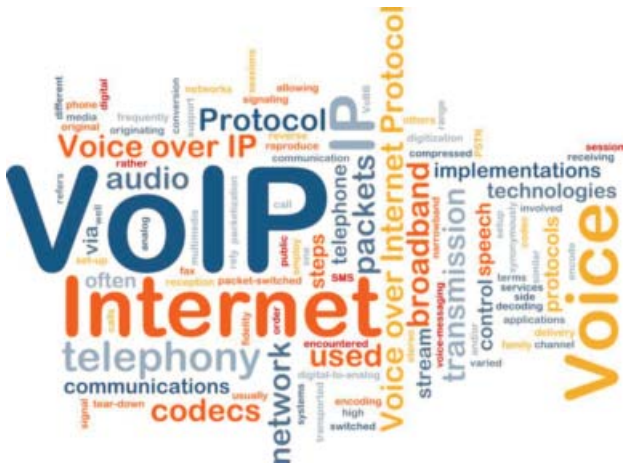
**Total Community Education Participation: 1,310**



# WEEKLY UPDATE

## ITTP Project: Downriver Campus

### VoIP Project Update



The Downriver Campus Operations and Administration Office VoIP training was held this week. On-site training will continue next week for the remaining departments. As training is completed, the new Cisco 8861 phones will be deployed to each staff member’s desk. The Eastern, Western and Northwest campuses are scheduled for the next phase of deployment.



**The District-wide VoIP deployment will be completed by the end of Summer 2015**

### Student Kiosk Update

Currently, the student information kiosk has been implemented at the Eastern and Downriver campuses. The next phase of the project will be to continue implementing at the Western, Northwest, and Downtown campuses. The electrical and network wiring work will begin next week.

### IT Fascinating Fact!

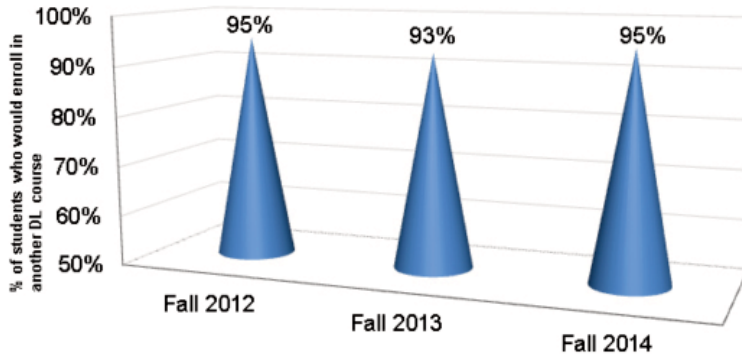
Just one gigabyte (GB) in a computer hard drive storage is the equivalent to storing a stack of documents that would reach around the height of an average two-story house. The average computer has around 500GB of storage space.



# Division of Institutional Effectiveness

## What's Trending at WCCCD Distance Learning

About 5.4 million students, or 1 in 4, took at least one distance learning education course during Fall 2012, according to the most recent data released by the National Center for Education Statistics. A 2014 survey of online students found that they put the most emphasis on reputation and cost when choosing an online program. WCCCD distance learning students were asked if they would enroll in another distance education course offered at WCCCD. The graph below shows their response rates across a three-year trend:



**WCCCD data based upon Student Survey of Instruction Survey results**

<http://www.usnews.com/education/online-education/articles/us-news-ranks-best-online-programs>

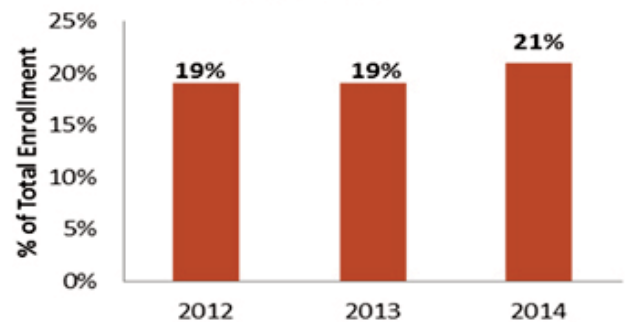
## WCCCD Distance Learning Student Profile

The Division of Institutional Effectiveness continues to conduct research on different groups such as distance learning students to identify demographic trends for program outcomes and measurements. The following data shows demographic data for WCCCD students who enrolled in at least one distance learning course in Fall 2014:

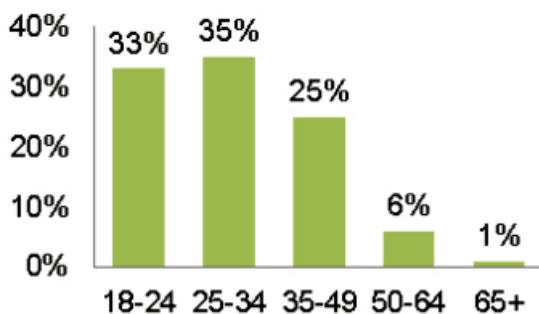
### Some states distance learning student's are from:

- \* Georgia
- \* Mississippi
- \* New Jersey
- \* New York
- \* Ohio
- \* Tennessee
- \* Texas
- \* Michigan

### Students taking online courses are trending up at WCCCD

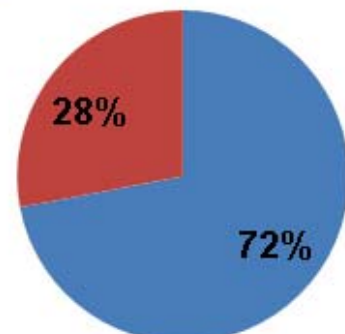


### Age Ranges



### Gender

■ Female ■ Male



# Division of Educational Affairs

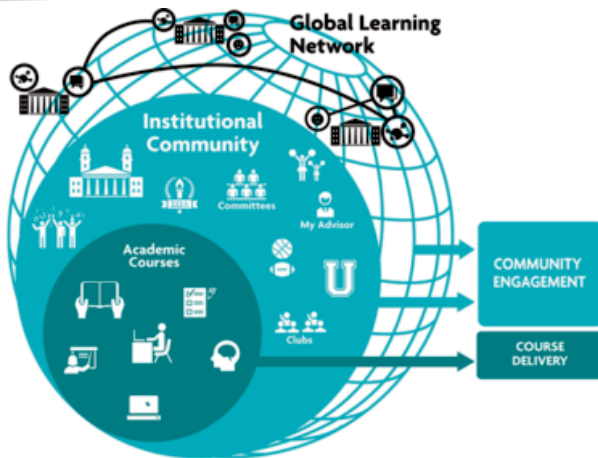
College-bound high school graduates are showing more interest in the blended model of instruction vs. the face-to-face approach according to the Eduventures' annual "College-Bound Market Update Report." Each year they survey high school sophomores, juniors and seniors about how they choose a college and their intentions. In a survey of 20,000+ students the desire for face-to-face courses dropped 10%.

**Source:** <http://campustechnology.com>



## Digital Video Production Short Films

Take time and enjoy some short films that Eastern Campus Instructor Patrick Sarnack's Digital Video Production I class developed. They can be viewed on their Youtube channel: <https://www.youtube.com/channel/UCzXJa000T8gQRh89iDdr-GYA>



## EDUCATION EXPERIENCE

## Blackboard: Community Engagement

WCCCD's Center for Distance Learning can help streamline groups and functions to create institutional communities. A new feature of Blackboard called Community Engagement, will allow WCCCD to create a customized Blackboard website, organize and deliver content, target information to our community, and organize users.

## New Program for the Fall!

Craft Brewing is one of our new career programs starting Fall 2015. According to a recent Free Press article, "The independent craft beer industry is having a tangible economic impact in Michigan, which is ranked fifth in the nation by the Colorado Brewers Association for the most (craft) breweries." WCCCD's Craft Brewing program will place our students on the inside track for success in this growing industry.





## Legislative Corner



### Personal Property Tax



### Community College Day

Edgar Vann attended Michigan Community College Association's Community College Day. He had the opportunity to highlight the important work WCCCD is achieving with Representative Fred Durhal, Representative Leslie Love and Representative Erika Geiss.

House Bills 4553 through 4558 were revised this week to make a number of changes relative to the personal property tax repeal approved by voters in August 2014. Ballot Proposal 1 of 2014 put into effect the changes to the personal property tax, passed as Public Act 80 of 2014, commonly known as the personal property tax repeal. Broadly speaking, the impact of PA 80 was to:

- Reduce business taxes through the phase-out of the tax on personal property, such as machinery, equipment, tools, and computers.
- Reimburse local units for the loss of personal property tax revenue, as well as protect school funding.
- Create the State Essential Services Assessment, with revenue directed to the General Fund, to partially offset the loss of the use tax revenue allocated to reimburse local units.

## International Programs and Global Partnerships

### INCREASE IN INTERNATIONAL STUDENT NUMBER IN THE U.S



According to U.S News, the U.S. enrolled a record-breaking 886,052 international students during the 2013-2014 school year, most of which are in the STEM program (Science, Technology, Engineering, and Math). The same trend is been evident at WCCCD with over 90% of international students enrolled in STEM programs.

# Profile of a Community College Student

Grants and loans are the major forms of federal financial aid for degree-seeking undergraduate students. College completion challenges stem from a myriad of factors including:

1. Insufficient financial resources for families and colleges
2. Inadequate high school academic preparation

The District continues to provide resources and employ targeted efforts to assist students with available financial and academic options that meet their specific academic short and long-term goals.

After all grant and scholarship aid, low-income students still have to finance an amount equal to approximately 76% of family income to pay for one year of college. They borrow big, work more, or drop to part-time status, reducing their likelihood of completion and ability to repay student debt.



Family Income Quintiles	Average % of Income Required to Pay for 1 yr of College After Grant Aid
\$0-24,500	76%
\$24,501-49,000	46%
\$49,001-80,000	33%
\$80,001-117,500	25%
\$117,501+	17%

Source: Ed Reform Now analysis of NPSAS:12 using PowerStats, <http://nces.ed.gov/datalab/>. Results based on full-time, full-year, one-institution dependent undergraduates at public and private nonprofit four-year institutions.

## Professional Development

\*Gail Arnold attended the Ford Motor Company's Employee Support Services Program Health and Education Fair at the Flat Rock Assembly Plant.

\*Lina Warra and Ella Lynch attended the Michigan Institute of Aviation and Technology's College of Technology Career Fair.



## UPCOMING WORKSHOP

Microsoft ACCESS 2010

Thursday, May 21, 2015, 12:00-2:00pm District Office Building Room 112

# Division of Human Resources

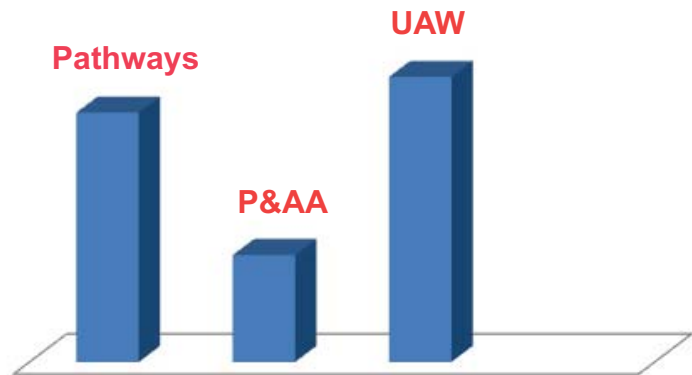


## Tuition Reimbursement Deadline

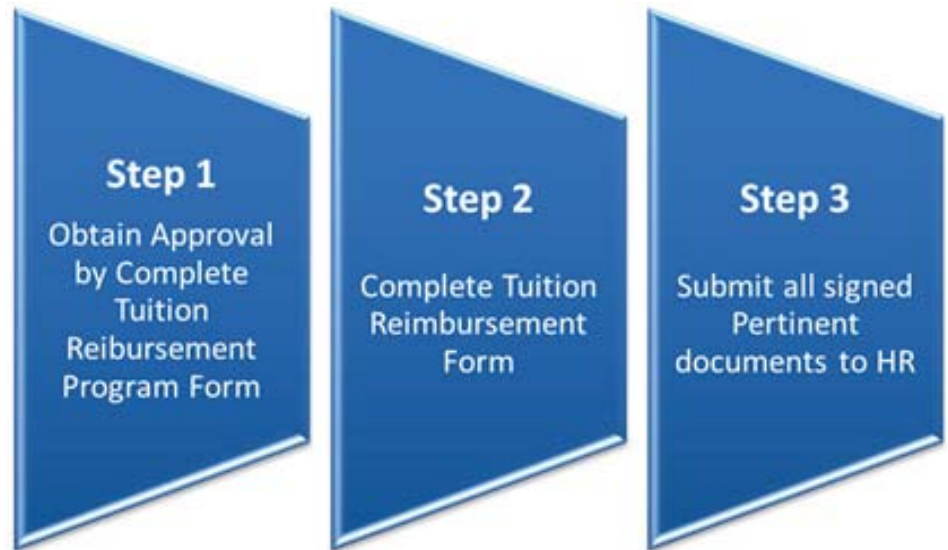
Tuition assistance is available to full-time and part-time regular staff. Employees are eligible for reimbursement between \$500 and \$2,000 depending on their union classification status. Employees must pass the class with a “satisfactory” mark in order to be reimbursed. The tuition reimbursement submittal deadline is approaching for the 2014/2015 fiscal year.

**The tuition reimbursement deadline for 2014/2015 fiscal year is June 30, 2015**

### Tuition Reimbursements Dashboard



**3 Easy Steps to a Great Benefit!**



# Office of Alumni and Institutional Advancement



## New Welding Scholarship available for WCCCD students!!

### Elsa Urbani Weissenberg and Max Weissenberg Welding Technology Program Equipment Award

This award is to provide financial assistance to the most deserving graduating senior in the Welding Technology Program to purchase his/her own welding equipment.

### Elsa Urbani Weissenberg and Max Weissenberg Welding Technology Program Scholarship

- \* Two semester scholarship
- \* Full-time students
- \* Completed at least one semester at WCCCD
- \* Minimum overall GPS of 2.5
- \* Applicant must be enrolled in the Welding Technology Program working toward a certificate or the Associate of Applied Science Degree
- \* Applicant must submit a 300-500 word essay

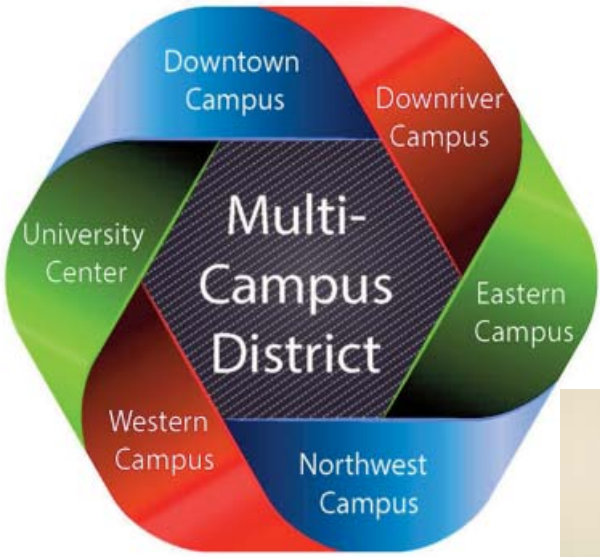


[Visit WCCCD's Scholarship page to apply!](#)

A screenshot of the Wayne County Community College District website. The header features the WCCCD logo, a search bar, and the slogan "ONE VISION, FIVE CAMPUSES". Below the header are navigation tabs for HOME, ABOUT US, PROGRAMS, DIVISIONS, STUDENTS, and FACULTY/STAFF. A banner image shows a smiling woman in a welding mask and apron. A purple text box on the left contains the following text:

The Wayne County Community College District Scholarship Committee is proud to announce the new Elsa Urbani Weissenberg and Max Weissenberg Welding Technology Program Scholarship for fall 2015!

To apply, click on link below.  
Deadline to submit application is Wednesday, July 1, 2015



# Blast from our past!



Information Technology



Dental Students



Biology and Chemistry students



Continuing Education Sewing and Interior Design Classes

