



FACULTY AND STAFF RETIREMENT CELEBRATION

Soheir Ali
Kathryn Burch
Donna Chapman
Clinton Donaldson
Donna Glaze
Lula Gordon

Beverly Green
Geraldine Green
Shirley Henderson
Thomas Hill
Regina Hopkins
Chong Houh

Maureen Hunter
Valorie Kimbrough
Janet Krawulski
Julie Lanclos
Jeanette Murphy
Michael Rich-Bey

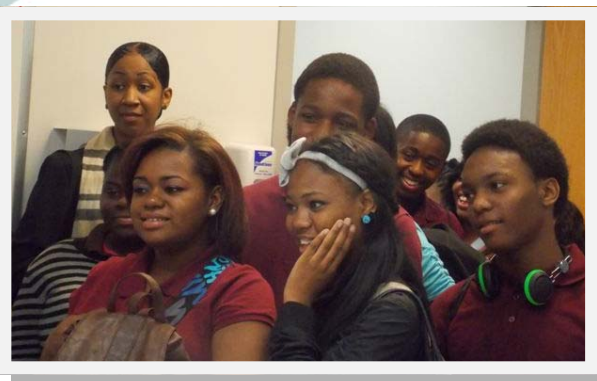
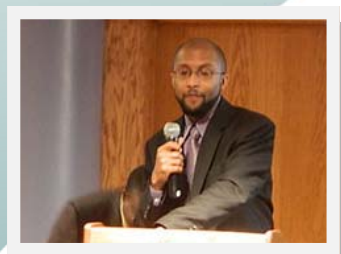
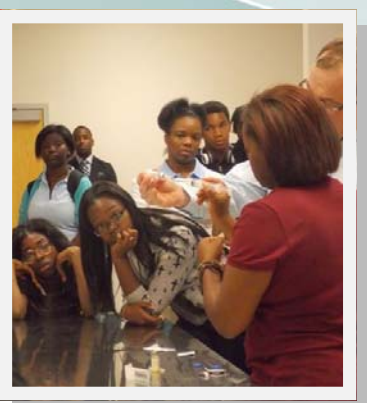
Velma Sullivan
Larry Tarrance
Bernice Taylor-Moreland
Atallah Turfe
Jack Wallace
Linda Webberman

NEW SIGNAGE AT THE NORTHWEST CAMPUS

The installation of the building signage for the Denise Wellons-Glover Welcome Center and the Larry K. Lewis Education Center at the Northwest Campus is now complete!



CAREER AND TECHNICAL ORIENTATION FOR THE EDUCATION ACHIEVEMENT AUTHORITY STUDENTS ATTENDING THE EASTERN AND NORTHWEST CAMPUSES



DIVISION OF STUDENT SERVICES

EDUCATION ACHIEVEMENT AUTHORITY OPEN ENROLLMENT COOKOUT

The Division of Student Services represented the District at the Education Achievement Authority (EAA) Open Enrollment Cookout at Belle Isle. EAA has partnered with WCCCD to allow juniors and seniors the opportunity to continue their vocational courses and obtain the necessary credits and/or nationally recognized certification needed for employment.



ACHIEVING THE DREAM



Achieving the Dream™

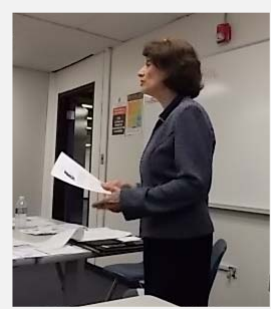
Community Colleges Count

The Achieving the Dream fall courses known as Learning Communities are off to a great start. Learning Communities help students build knowledge and skills essential for success in college, from test taking, study and time-management skills to awareness of campus facilities and support services.

Learning Community courses are a key factor towards student success. They generally involve a group of students taking two or more linked classes together as a cohort ideally with the instructors of those classes coordinating course outlines and assignments as well as jointly reviewing student progress.

MICHIGAN COLLEGE/UNIVERSITY PARTNERSHIP UPDATE

Yolanda Russell and Judy Smouter met with Michigan College/University Partnership (MICUP) students for the upcoming Michigan Technological University (MTU) campus tour. The tour will acquaint students with the program including its summer paid internships and the step-by-step process to follow in order to become a MTU student upon graduation from WCCCD.



ATTENTION WILDCAT FANS!



The 2013 schedule for the Wildcat cross country teams is available on our website. The men's cross country team has three returning runners, Angelo Wooten, Larry Goldsby, and Justine Omundi. The women's team has two runners, Chinyelu Umeokolo and Chakeila Johnson.

FINANCIAL AID

The District Financial Aid Office made the first disbursement of aid for 2013-14 on September 5th. Refund checks will be issued within 14 days of student status. Students should continue to check Web Gate for account updates.





Northwest Campus

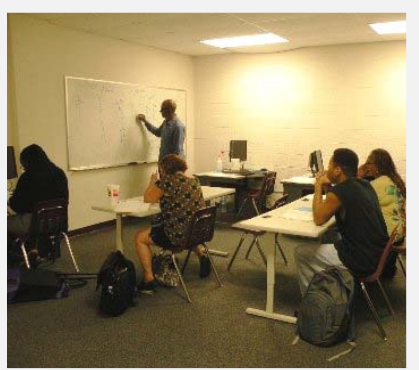
YOU CAN MAKE A DIFFERENCE: CREATING CHANGE WITHIN YOURSELF, FAMILY AND COMMUNITY

In partnership with the Detroit Area Agency on Aging and Neighborhood Service Organization, a workshop was conducted at the Northwest Campus entitled “You Can Make A Difference: Creating Change within Yourself, Family and Community,” which was designed for grandparents, non-professionals and professionals in the field of caregiving.



MATH TUTORING WITH MICHAEL MASON

Students are getting an early start seeking assistance with their Math classes to ensure academic success. Math tutor, Michael Mason engages a group of students in concepts. Mr. Mason tutors individuals and groups in Math 100 – 113.



IN THE MAIL...

JoAnn Nyquist received the following letter from Anna Pattison, administrator, author, editor and lecturer regarding the Dental Hygiene Program and a recent course she taught at the District for faculty.



“Thanks for your interest in the videos and your progressive and open attitude. I can see why your leadership has made your Dental Hygiene Program one of the best in Michigan.”

THE SCHOOL OF CONTINUING EDUCATION AND WORKFORCE DEVELOPMENT

The School of Continuing Education and Workforce Development is pleased to announce the newly developed partnerships for the Youth Enrichment Series (Y.E.S.) with Wick Elementary School of Romulus and A. Phillips Randolph Career and Technical Center. The schools are excited to have presentation topics including bullying, self-esteem, achieving high success, and conflict resolution.



Mary Ellen Stempfle University Center

The Mary Ellen Stempfle University Center partnered with the Wayne County Criminal Defense Bar Association, the Black Women Lawyers Association of Michigan, and Wayne County’s Third Circuit Court Judge Deborah Thomas to present the Community Forum: Expunge Your Record. Attendees learned the process and procedures to expunge a criminal record and attorneys were available for a question and answer session.



Downriver Campus

PHI THETA KAPPA AND GLEANERS COMMUNITY FOOD BANK

Phi Theta Kappa (PTK) member Alexandra Sponsky provided leadership to collect food for Gleaners Community Food Bank of Southeastern Michigan. PTK collected six large containers of food during the month-long food drive. This will feed 260 people for a day!



THIRD JUDICIAL CIRCUIT COURT WORKSHOP

The Downriver Campus hosted the Third Judicial Circuit of Michigan, Friend of the Court workshop. This workshop provided community members with successful solutions and strategies as it relates to being a father, raising a family, and surviving under the pressure of today's society. Discussions included financial obligations related to child support, legal options, and building positive relationships.



ST. VINCENT DEPAUL'S PRESCRIPTION DRUG PROGRAM

The Downriver Campus held a St. Vincent DePaul's Prescription Drug Program workshop. This workshop trained members of the St. Vincent DePaul Society on how to use the Prescription Drug Program to better help the community they serve.



The Michigan Institute for Public Safety Education hosted Lincoln Park Fire Department for a photo shoot to showcase their new ladder truck.



- The Michigan Institute for Public Safety Education (MIPSE) hosted the Local Emergency Planning Committee meeting presented by Wayne County Homeland Security. This group sets policy for hazardous materials within the county.
- MIPSE hosted the United States Coast Guard Auxiliary for their monthly meeting. These meetings are an opportunity to share information from the national and district levels, and relay information back up the chain of command.

Eastern Campus



SCIENCE LABS AT THE EASTERN CAMPUS

Students at the Eastern Campus were eager and excited on their first day of science classes. The science labs are fully equipped with supplies for lab experiments



DIVISION OF EDUCATIONAL AFFAIRS

NEW AUTO BODY TECHNOLOGY PROGRAM AT THE EASTERN CAMPUS

Starting in Spring 2014, the Eastern Campus will again have autos in the auto bay. This week the initial program team consisting of Mawine Diggs, Dan Saunders, George Patrash and Dr. Frank Dunbar, met to coordinate the first steps to make the program a reality.

LEARNING RESOURCE CENTER

Learning Resource Center (LRC) Statistics

The comparison chart shows the data reported for LRC services provided to students, faculty, staff during the Summer 2012 and Summer 2013 semesters:

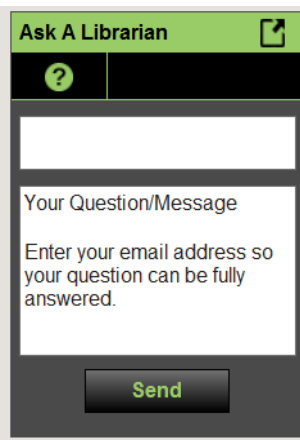
Services	Summer 2012	Summer 2013
General Circulation of Books	1,070	1,511
Reserved/ Textbooks	2,059	2,631
New Library Cards	572	742
Patrons Served	89,548	96,349
Class Orientations	26 classes/487 students	43 classes/674 students
AV Equipment Requests	2,713	2,982



NATIONAL LIBRARY CARD SIGN-UP MONTH

Visit a campus Learning Resource Center to activate your library account and find out more about the benefits of your library card.

ASK-A-LIBRARIAN



The Ask-a-Librarian widget has been updated! Research Help Now is a project of the Michigan Virtual Reference Collaborative, funded by each participating library. This service allows our students, faculty, and staff with help for academic related questions 24/7.

CAMPUS

Downtown
Downriver
Downriver
Northwest
Northwest
Downtown
Eastern
Western
Western
Eastern

DATE

September 9, 2013
September 9, 2013
September 10, 2013
September 11, 2013
September 11, 2013
September 12, 2013
September 16, 2013
September 16, 2013
September 18, 2013
September 25, 2013

TIME

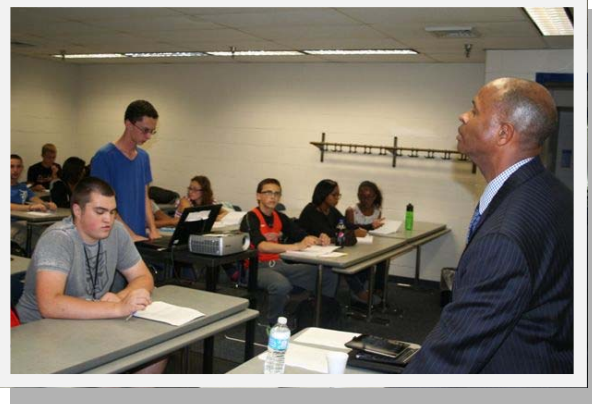
11:00 a.m.
6:00 p.m.
10:00 a.m.
11:00 a.m.
6:00 p.m.
6:00 p.m.
1:00 p.m.
6:00 p.m.
6:00 p.m.
1:00 p.m.

Western Campus



BELLEVILLE HIGH SCHOOL DUAL ENROLLMENT STUDENTS

Belleville High School students began the Fall semester at the Western Campus as dual enrollment students. Students are currently enrolled in a philosophy class as a cohort with plans of expanding into other classes in the Spring semester.



on the move

Mike Dotson participated in Huron School District's opening day at Huron High School. The ceremony was an opportunity for Superintendent Richard Naughton and his staff to meet with all teachers in the district and kick off the school year with words of encouragement and discussion about the district's strategic plan.

CONGRATULATIONS DR. CURTIS JOHNSON!

Curtis Johnson successfully completed his dissertation on "The Impact of Performance Based Funding" at Argosy University. This was a qualitative case study with a business approach. Congratulations Dr. Curtis L. Johnson!



Downtown Campus

SPRING ARBOR UNIVERSITY



Representatives from Spring Arbor University were at the Downtown Campus to provide information to students interested in undergrad programs from Accounting to Biblical Studies.

DETROIT SCHOLARSHIP FUND

The Detroit Scholarship Fund visited the Downtown Campus to give students an opportunity to retrieve their certificates and ask questions regarding available scholarship opportunities.

DOWNTOWN CAMPUS LEARNING RESOURCE

With Fall 2013 courses underway, the Downtown Campus Learning Center has been filled to near capacity during lab hours. Students appreciate the assistance given by campus staff on basic web navigation. Students enjoy utilizing the Learning Center between classes for homework and Internet access.



DIVISION NEWS

INFORMATION TECHNOLOGY

Use of technology is changing the instructional model in high schools. The model is changing from front-of-the-room, teacher-centered instruction to student-centered, student-driven learning, empowered by technology. One program that has become a staple across many campuses in Florida is [StudySync](#), a cross-curricular reading and writing program that delivers content to any mobile or computing device, 24/7. Source: eschool news



Website Hits

For the week of August 26 – September 1, we received 65,084 visits to our website. Visits came from 55 countries.

TOP FIVE COUNTRIES

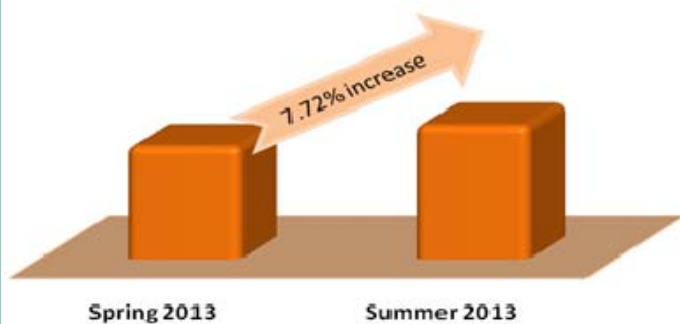
United States
Canada
India
Nigeria
Germany

INSTITUTIONAL EFFECTIVENESS

Did you Know? 90.7% of WCCCD students who participated in the Student Self Center Survey indicated that they were satisfied with the services at the Student Self Service Center. This was a 7.72 % increase from the previous semester overall satisfaction levels.

The survey is implemented at the campus student self service centers each semester where students are able to follow up on their accounts and gather important information on their Webgate accounts. The data provided will assist the Division of Student Services in evaluating and making improvements to the center.

Overall Experience in the Self-Service Center



ADMINISTRATION AND FINANCE

RETIREMENT SAVINGS STATISTICS PROVIDED BY THE MICHIGAN PUBLIC SCHOOL EMPLOYEES RETIREMENT SYSTEM



- Most financial experts estimate that people will need 80% of their working income to maintain their preretirement standard of living.
- 58% of workers say they're saving for retirement, but 45% have less than \$25,000 in assets (not counting their home).
- 25% of workers do not sign up for their employer's 401(k) retirement savings plan and only 10% contribute the maximum amount allowed.
- Nearly half of all American workers do not contribute enough to their employer's 401(k) plan to get the full match amount.
- About 50% of all American workers cash out their 401(k) savings when they change jobs instead of rolling it over into an IRA, which would avoid tax implications and continue growing their retirement savings.
- Only 2% of Americans are self-supporting at 65.
- 68% of workers plan to work during retirement.
- Almost 70% of workers expect to work until they retire, but 40% end up having to leave the workforce earlier than expected due to health problems or company downsizing.
- Only 19% of workers know when they would be eligible for social security benefits. Visit ssa.gov to estimate your benefits.

It's never too early or too late to plan for retirement. Whether you are retiring next year or in the next 10 to 20 years, planning now is key to a successful retirement. For information on further retirement planning with MPERS please log on to miAccount by visiting the ORS website at <http://www.michigan.gov/orsschools>



Jacob Keli attended the National Institute of Government Procurement's 2013 Annual Forum and Products Exposition. The forum featured speakers and workshops specific to the needs of procurement offices of all sizes, as well as an opportunity to network with peers from around the globe, learning and sharing best practices.

DISTRICT PUBLIC SAFETY

Lieutenant (Buck) Livadic and Wayne County Sheriff Sergeant Green met to discuss and strategize security operations throughout the District.



PROFESSIONAL CLOSET

Thank you all for the items you have donated to our Federal Work Study (FWS) Professional Closet initiative. We are still in need of particular sizes for many of our FWS students. Below is a list of items that are still needed to fulfill many of the requests we have received. If you have these items or know of someone who does, please donate these items to the International Program/Global Partnership Department located on the 3rd floor.

Female:
Bottoms-sizes:
8,10,12,14,16,18)
Tops-sizes: Small, Medium,
Large, XL,2X,3X

Male:
Pants- sizes: 44-50
Shirts- sizes: 4X and 5X

Help us to continue to support our FWS students through our professional closet initiative by donating your old gently used clothes. Let's continue to make a difference in our students' lives.

DEFERRED MAINTENANCE

In preparation for the Fall semester, a variety of maintenance and repair classroom projects was completed by the Eastern Campus Facilities Team.



OFFICE OF ACCOUNTABILITY AND TRANSPARENCY

The District's Office of Accountability and Transparency provides data and audited reports that improve controls and allow for data driven decisions that lead to continuous quality improvements.

HUMAN RESOURCES

TO BETTER SERVE YOU....

As you further your educational pursuit by obtaining certain degrees, licenses or certificates, please remember to take the opportunity to ensure that the Human Resources Division has your appropriate credentials, transcript and updated resume on file.